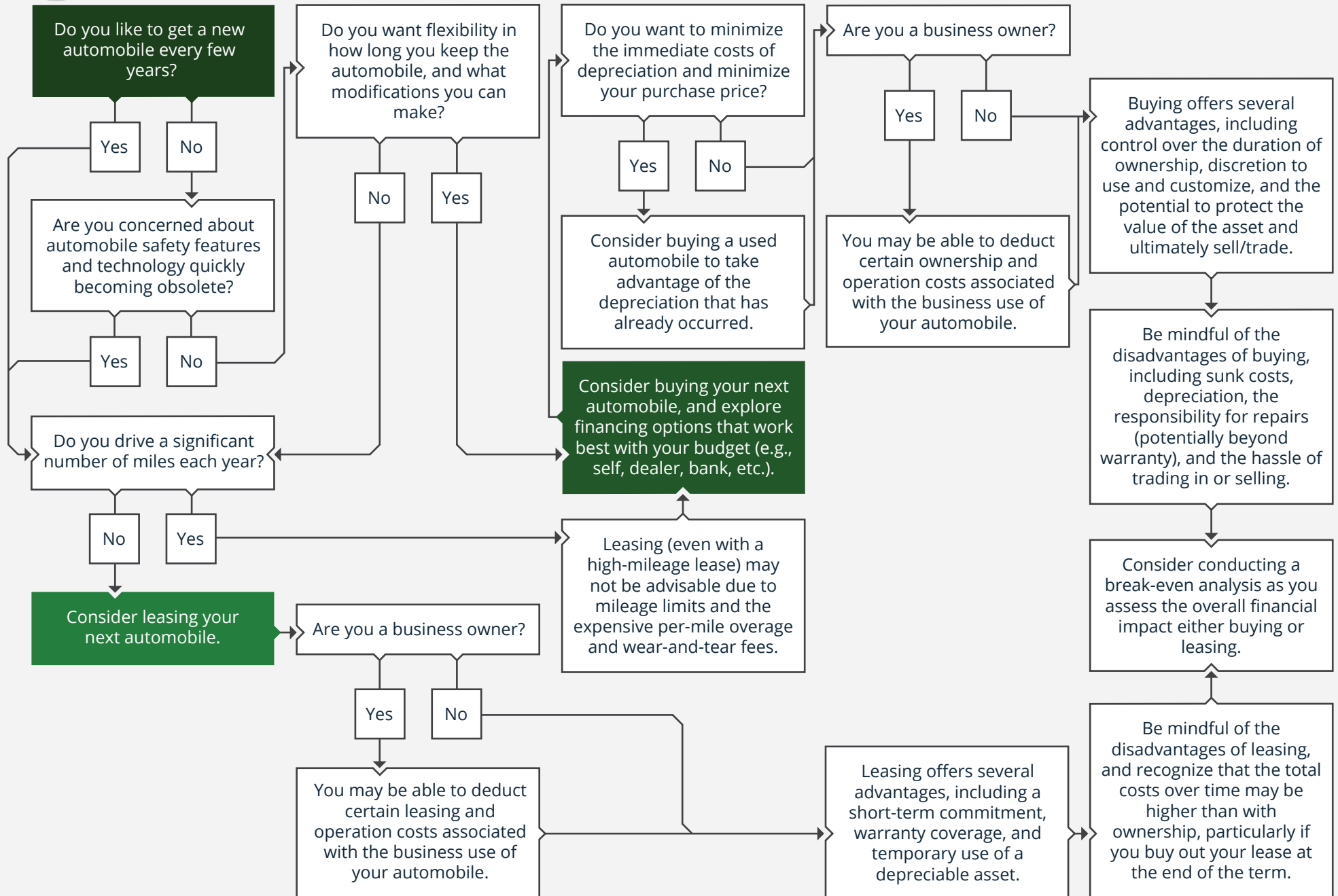


2024 · SHOULD I LEASE OR BUY MY NEXT AUTOMOBILE?

 Start Here



Root. Nourish. Grow.

If Money wasn't a barrier, what would your life look like? This is a question we ask each and every client. How would you like your money to support your life? We believe that "Life is about events, supported by your dollars and cents" and at Rooted Planning Group, we know that when your roots are strong, your trunk and branches are well positioned for growth.

We want to ensure you get to that ideal life in the most graceful way possible. So you can save for that big purchase, send the kids off to college, and retire! Rooted Planning Group is a fee only planning group, so we only do what is in your best interest.

A Message from our Founder, Amy Irvine, CFP®, EA, MPAS®, CCFC

I started Rooted Planning Group out of frustration, because I really wanted to help clients build their wealth in a "different" way than the traditional wealth management firm. We are an all-female, ensemble fee-only financial planning firm, and I established our firm to always act as a fiduciary. Our services include cash flow analysis, goal planning, debt reduction and planning, student loan planning, tax planning (and preparation), education planning, investment planning, employee benefits, and risk planning.

We typically work with professional women and couples who fall in the Gen-Y, Gen-X or late-stage baby boomer age range. A fair number of our clients are lawyers, engineers, and small business owners.

It is our greatest desire to help other women feel empowered about their finances. We strive to help people grow their wealth, which sometimes means we start in the negative, with the goal of growing to the positive.

For more information and disclosures about our firm, visit: www.rootedpg.com

Amy Irvine

Compliance Office: 10 E Market Street | Corning | NY Satellite Offices: Parrish, FL | Valliant, OK | Hornell, NY | Serving Clients Virtually
info@rootedpg.com | 607-438-2761 | www.RootedPG.com

